

# Beneficiaries of Employment Insurance (EI) regular benefits in London Economic Region (ER)

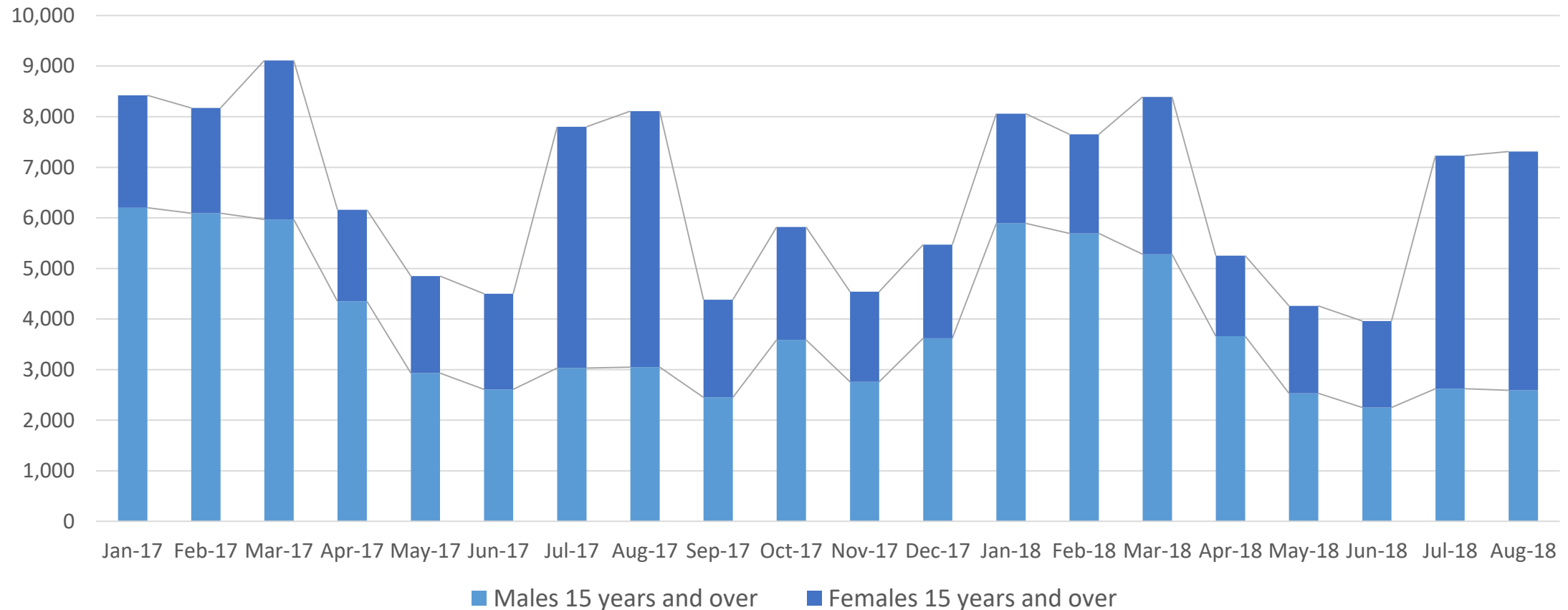
---

August 2018

Emilian Siman, Data Analyst

Local Employment Planning Council and Elgin Middlesex and Oxford Workforce Planning Development Board

# Beneficiaries of EI regular benefits\* in London Economic Region by gender



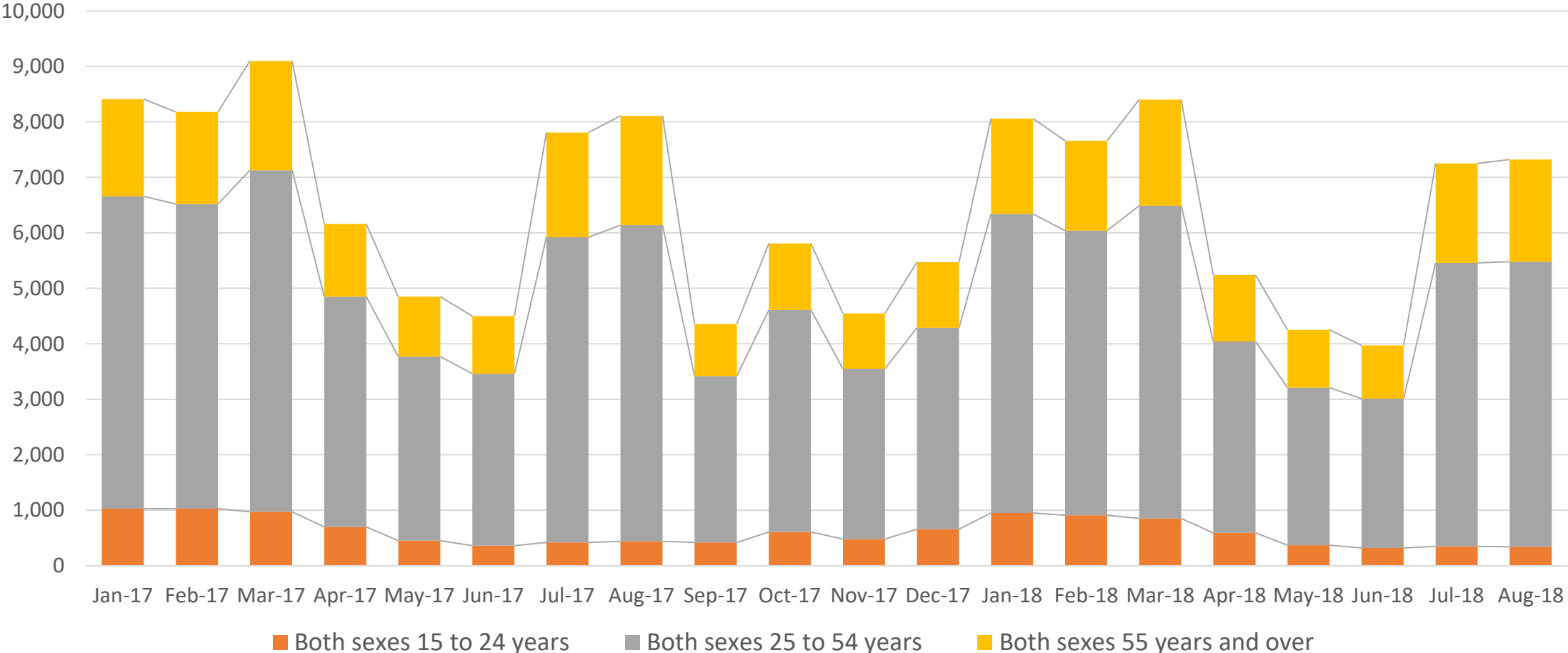
Source: Statistics Canada, table 14-10-0014-01

- Regular benefits are paid to claimants who have temporarily or permanently lost their job. In order to be eligible to regular employment insurance benefits, individuals must have lost their jobs through no fault of their own (for example, due to shortage of work, seasonal layoffs, etc.) and are available for and able to work.

# Observations

- 1.2 % increase in the number of EI beneficiaries - regular benefits in London ER between July and August 2018.
- 9.6% decrease in the number of EI beneficiaries - regular benefits in London ER between August 2017 and August 2018.
- Overall, there has been a decrease in the total number of EI beneficiaries - regular benefits in London ER between 2017 and 2018.
- In London ER, women contribute significantly to the change in the number of EI beneficiaries – regular benefits during the months of July and August.
- In London ER, males have a large contribution to the change in the number of EI beneficiaries – regular benefits in quarter one of the year.

# Beneficiaries of EI regular benefits in London Economic Region by age group

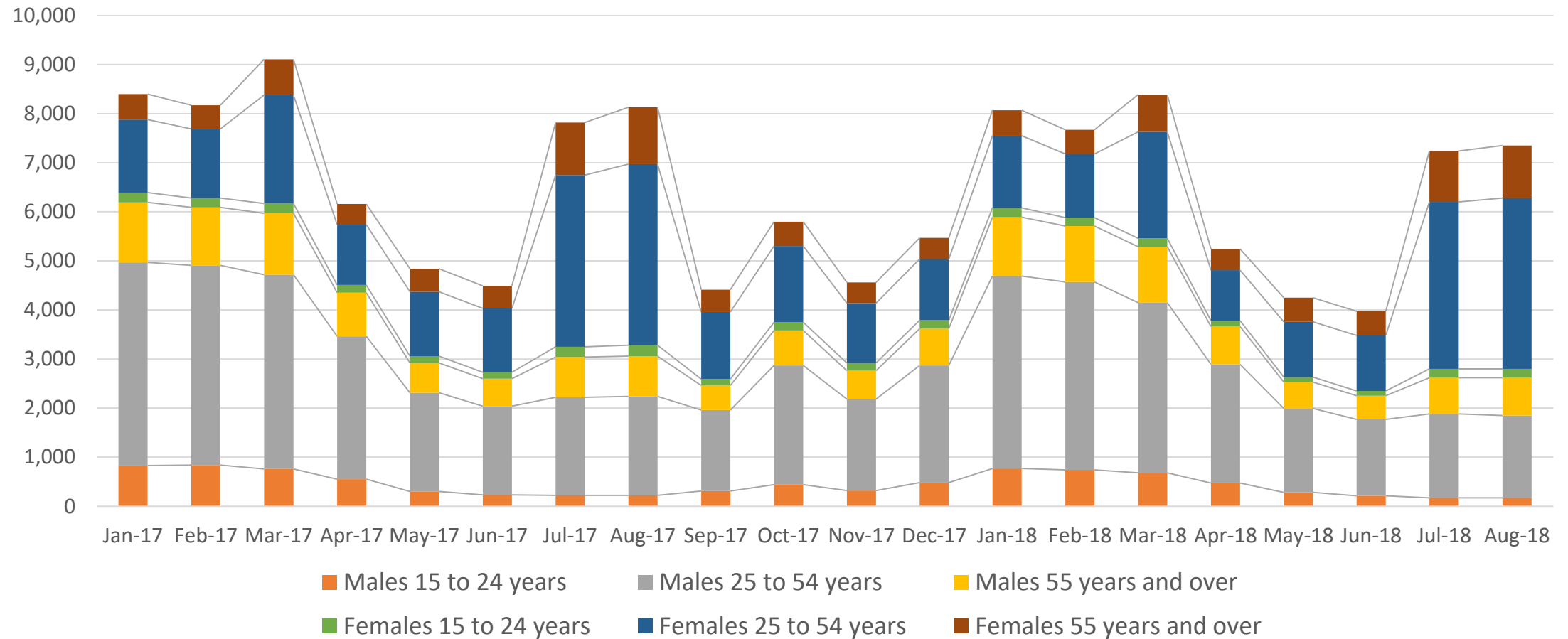


Source: Statistics Canada, table 14-10-0014-01

# Observations

- The largest age group of EI beneficiaries - regular benefits in London ER is the “25 to 54 years old.”
- In London ER, the “25 to 54 years old” group of EI beneficiaries – regular benefits registered a marginal growth of 0.6% between July and August of 2018 and contraction 9.8% between August 2017 and August 2018.
- The second large age group among EI beneficiaries - regular benefits in London ER is the “55 years old and over.”
- In London ER, the “55 years old and over” group of EI beneficiaries – regular benefits suffered a small growth of 2.8% between July and August of 2018, and a contraction of 6.6% between August 2017 and August 2018.
- In London ER, the “15 to 24 years old” group of EI beneficiaries – regular benefits experienced the largest relative contraction of 2.9% between July and August 2018 and of 22.7% between August of 2017 and August of 2018.
- Seasonal variation is present in this data: January February March and July August seem to be the months with the large numbers of beneficiaries.

# Beneficiaries of EI regular benefits in London Economic Region by gender and age



Source: Statistics Canada, table 14-10-0014-01

# Observations

- In London ER, males of all age have a large contribution to the variation of the number of EI beneficiaries – regular benefits in quarter one of every year. This could be linked to local seasonal industries such as Construction, Agriculture, Retail and Accommodation and Food Services.
- In London ER, “25 to 54 years old” and “55 years old and over” females contribute significantly to the variation in the number of EI beneficiaries – regular benefits during the months of July and August. This could be linked to the children in care, school, the summer season, work in public or nonprofit administration sectors.

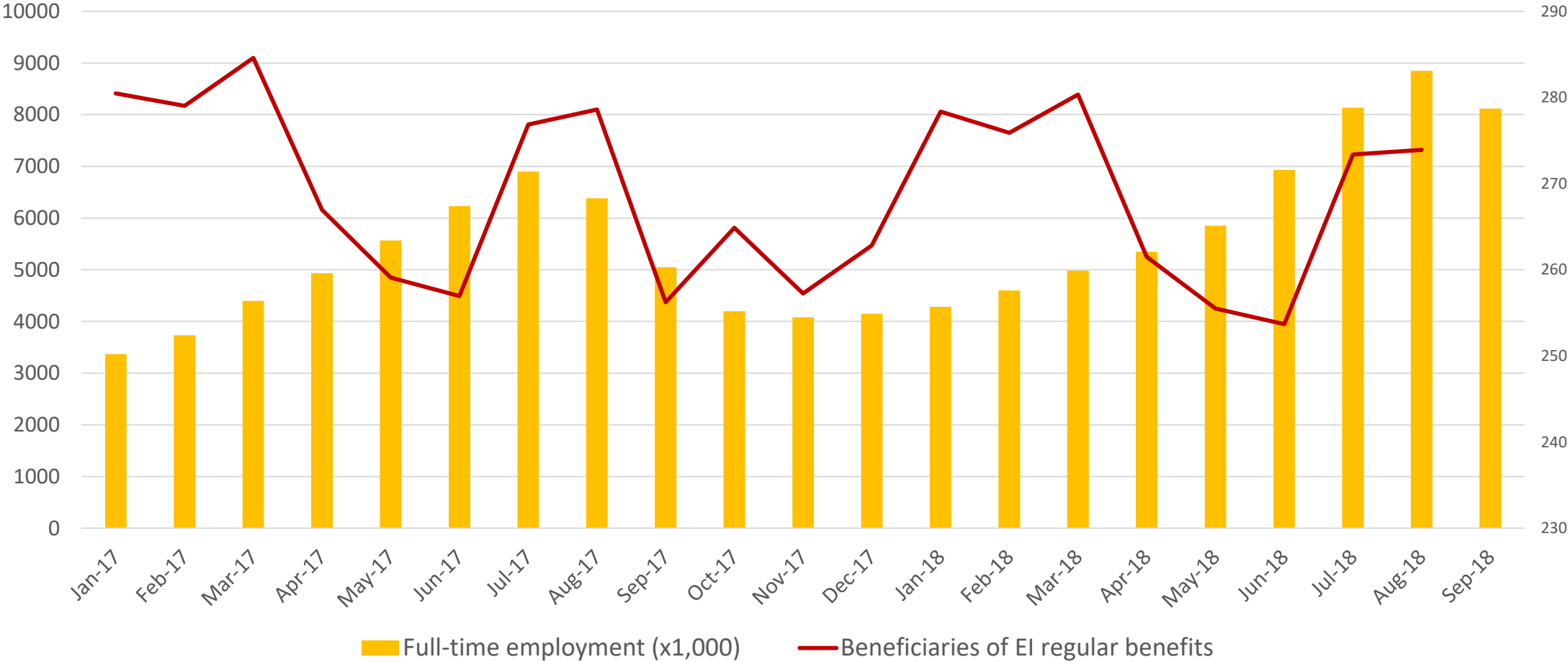
# Labour force characteristics and beneficiaries of EI regular benefits in London Economic Region



Sources: Statistics Canada, table 14-10-0014-01 and table 14-10-0293-02



# Labour force characteristics and beneficiaries of EI regular benefits in London Economic Region



Sources: Statistics Canada, table 14-10-0014-01 and table 14-10-0293-02

# Labour force characteristics and beneficiaries of EI regular benefits in London Economic Region



Sources: Statistics Canada, table 14-10-0014-01 and table 14-10-0293-02

# Observations

- In London ER, the variation in the number of EI beneficiaries – regular benefits is more likely to be explained by the change in the full time jobs than by the change in part-time jobs across the year.



The LEPC is a project of:



In partnership with:



This project is funded in part by the  
Government of Canada and the Government  
of Ontario.