

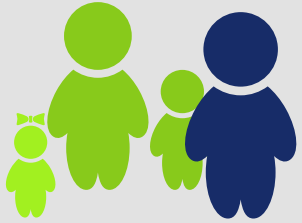
Mar.
2019

Labour Market Facts



lepc | Local Employment Planning Council

LONDON ECONOMIC REGION (Elgin, Middlesex and Oxford Counties)



Population (15+): 579,500 people

Labour force: 352,300 people



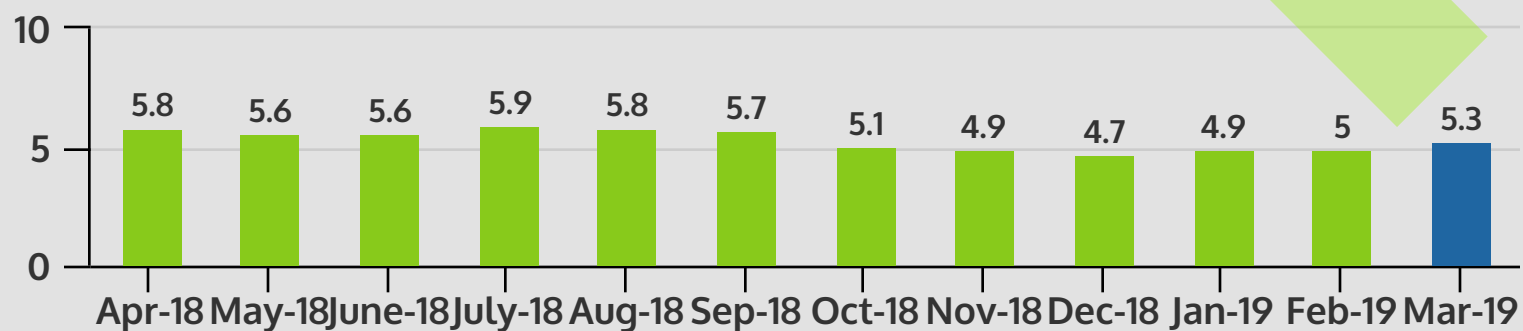
Employment : 333,600 people

.....→ **Full-time: 264,700 people**

.....→ **Part-time: 68,800 people**

Unemployment : 18,700 people

Unemployment rate [%]



Not in labour force: 227,200 people

Participation rate: 60.8%

The Local Employment Planning Council is supported by a partnership between:



source: Statistics Canada, table 14-10-0293-01

www.localemploymentplanning.ca
www.worktrends.ca



Ontario
This project is funded in part by the Government of Canada and the Government of Ontario.